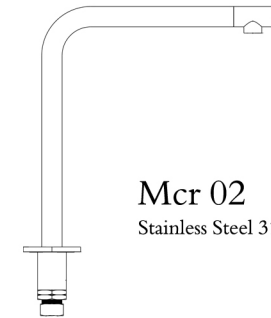


## McCr 02



McCr 02  
Stainless Steel 316 L

High spout single lever basin mixer

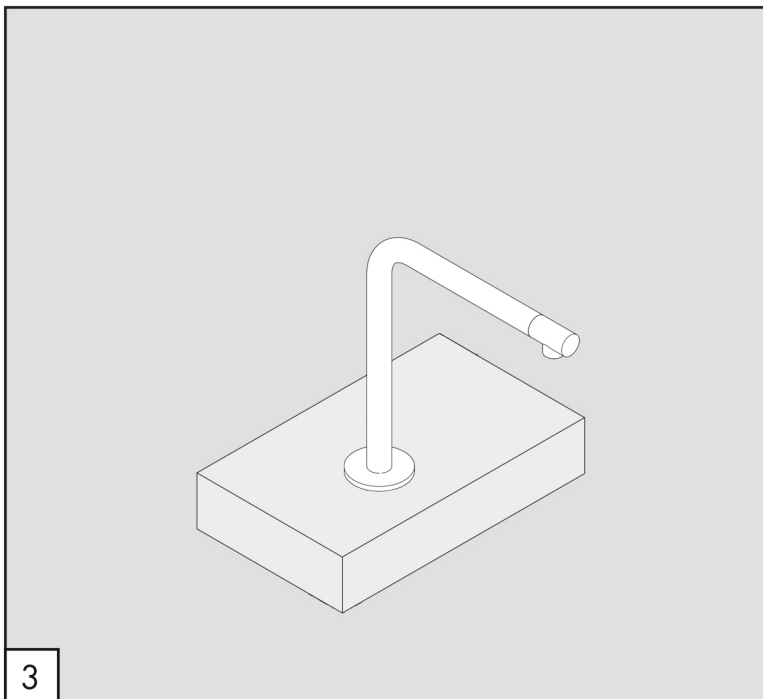
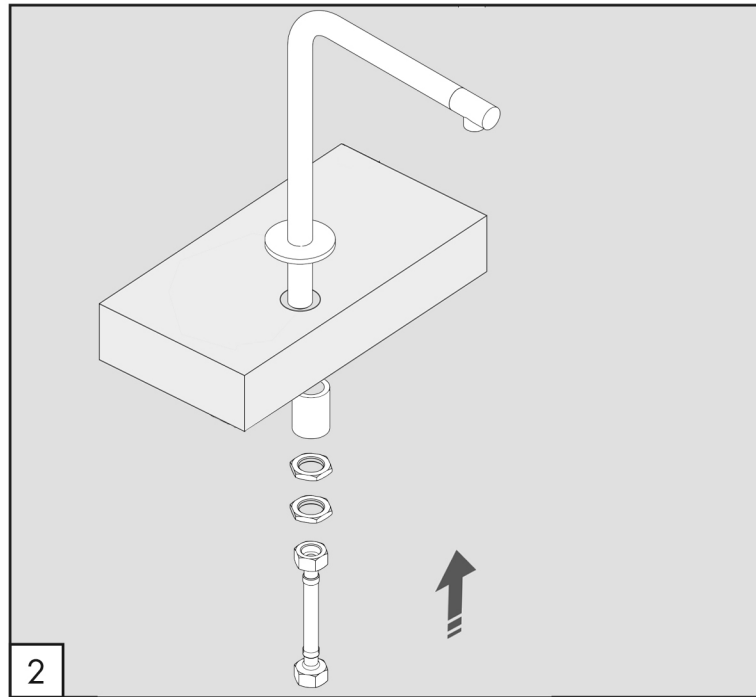
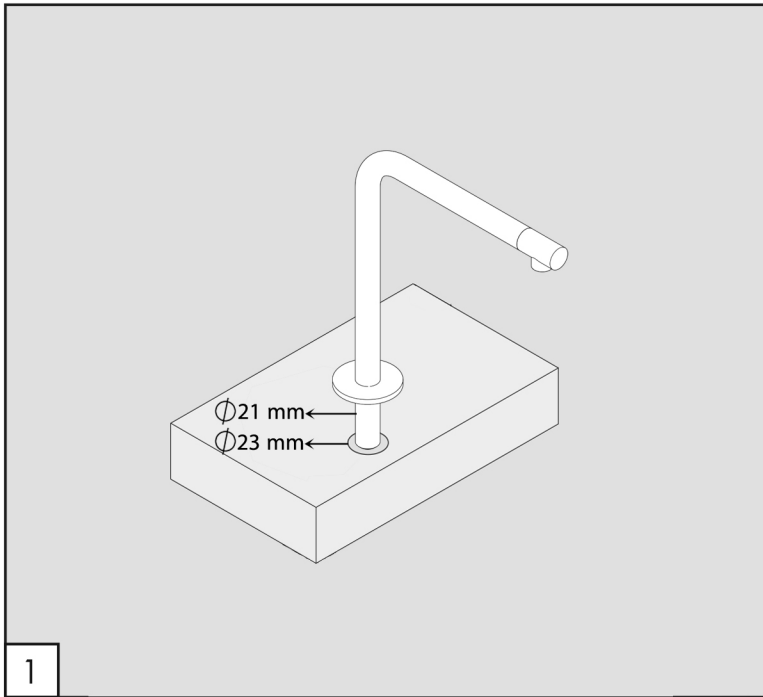


Flow rate aerator 5 l/min / 1.3 gpm, water saving

### MAINTENANCE


DO NOT USE		chloric and muriatic acid
		hydrofluoric acid
		chlorine bleach
TO USE		neutral pH detergent





## Mcr 02

### WORKING TEMPERATURE

 max. 70 °C  
max. 158 °F

