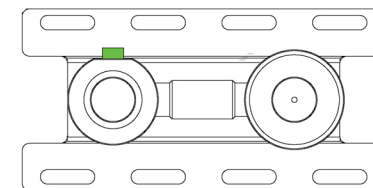


Ma 109



Ma 109
Internal part for wall basin mixer-33

QOOP

Stainless steel 316L

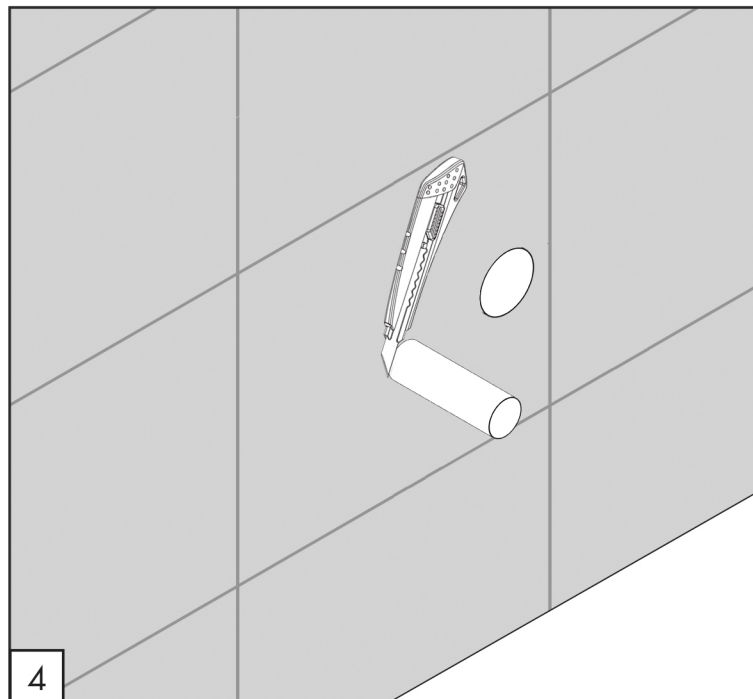
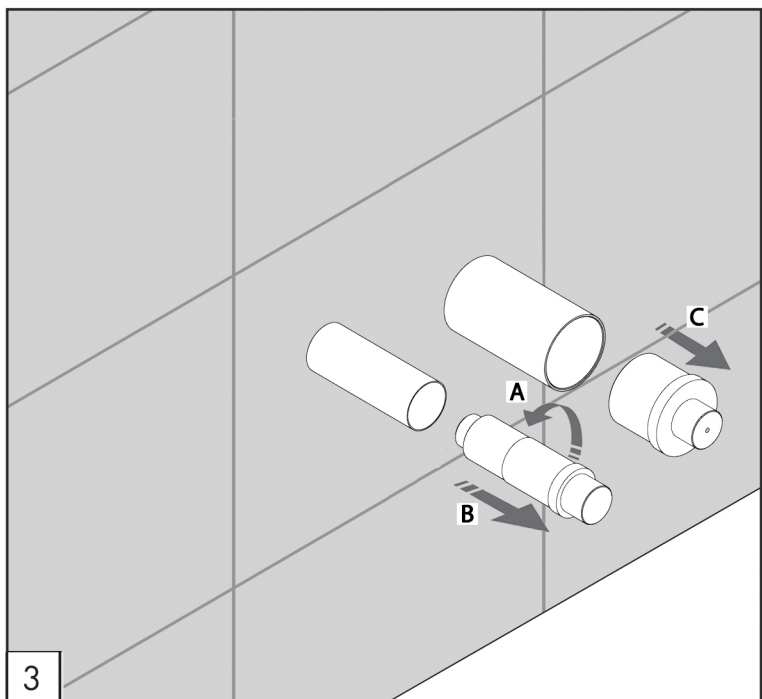
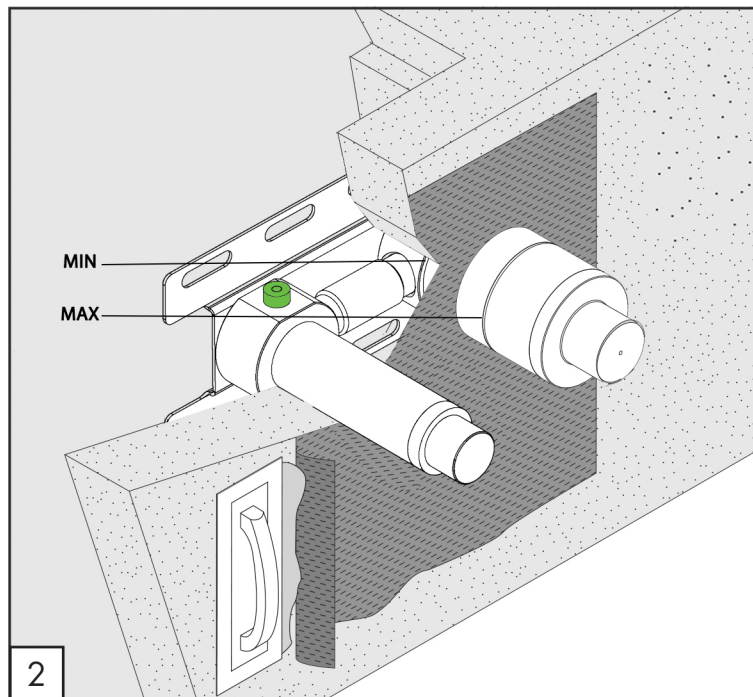
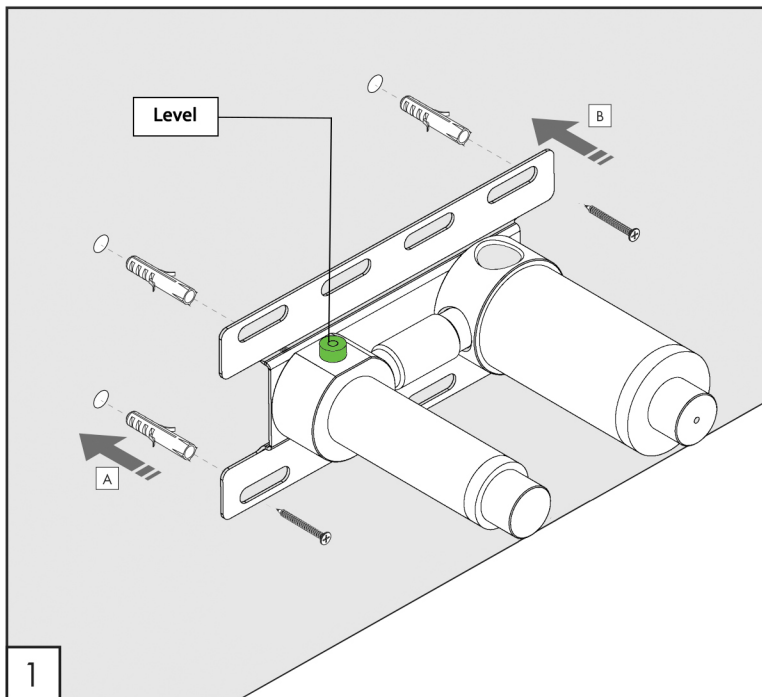


Flow rate aerator 5 l/min / 1.3 gpm, water saving

MAINTENANCE

DO NOT USE	HCl	cloric and muriatic acid
	HF	hydrofluoric acid
	NaClO	chlorine bleach
TO USE	pH 7	neutral pH detergent






Ma 109

TECHNICAL WARNINGS

The pipes have to be rinsed thoroughly before installation.
 Avoid pressure differences between hot and cold water supply.
 Use of a pressure reducer when static pressure is higher than 5 bar to avoid damage of the cartridge.

WORKING TEMPERATURE

 max. 70 °C
 max. 158 °F

