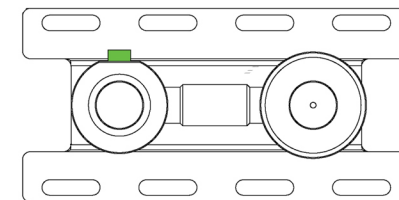


Ma 102



Ma 102
Internal part for wall basin mixer-42

QOOP

Stainless steel 316L

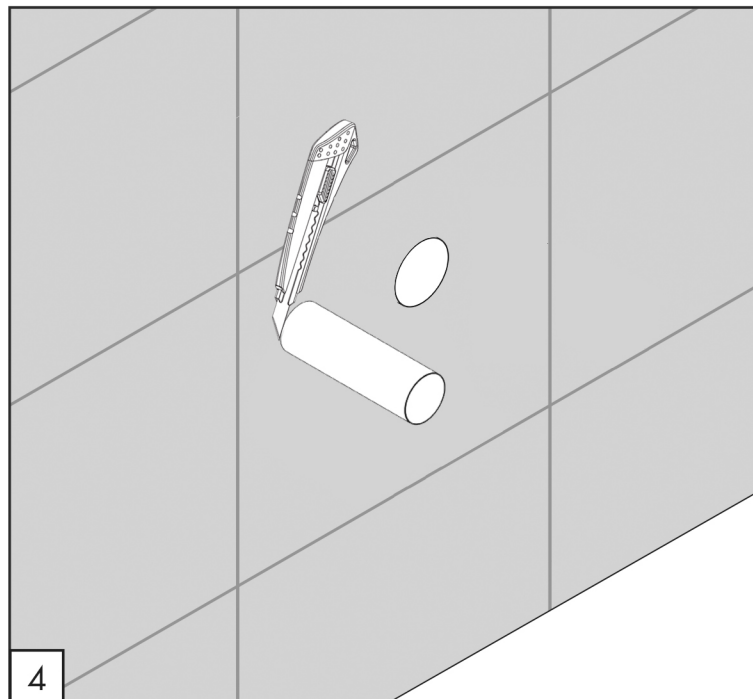
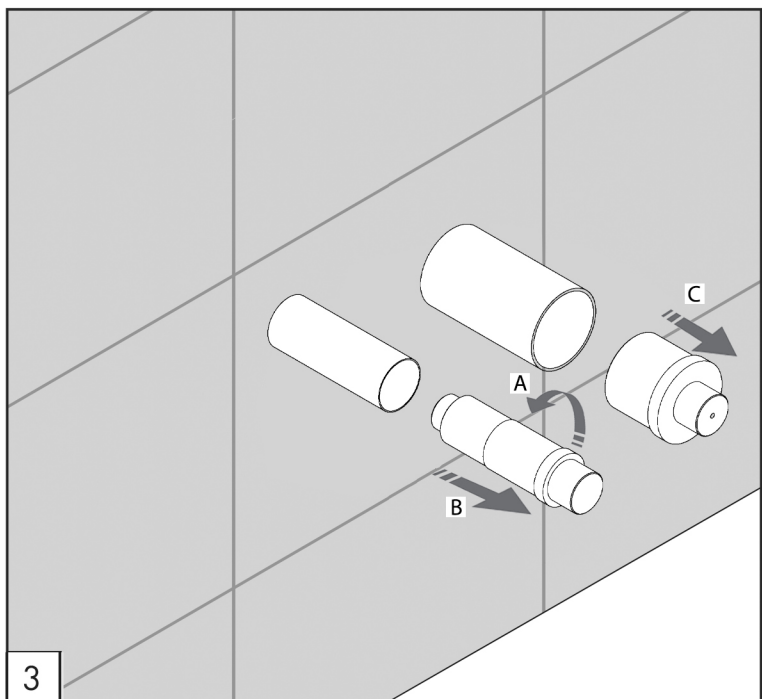
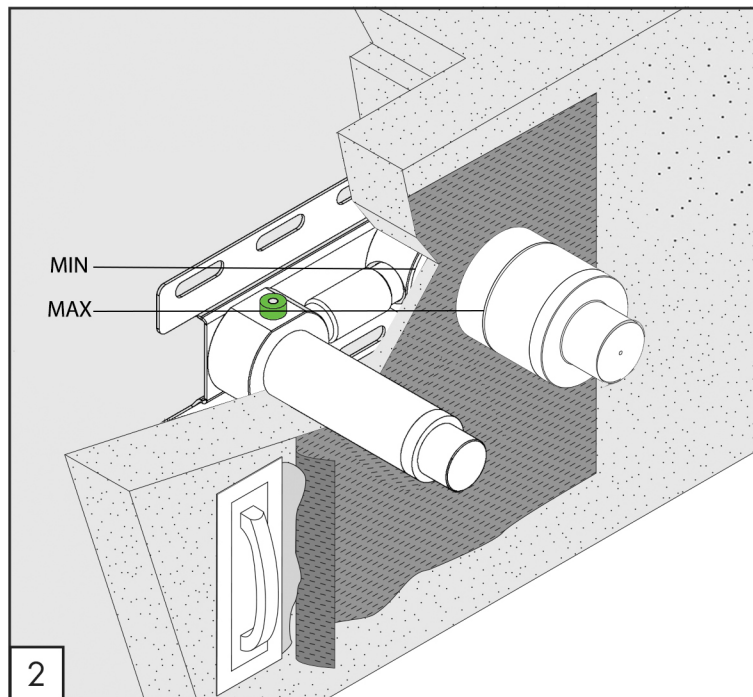
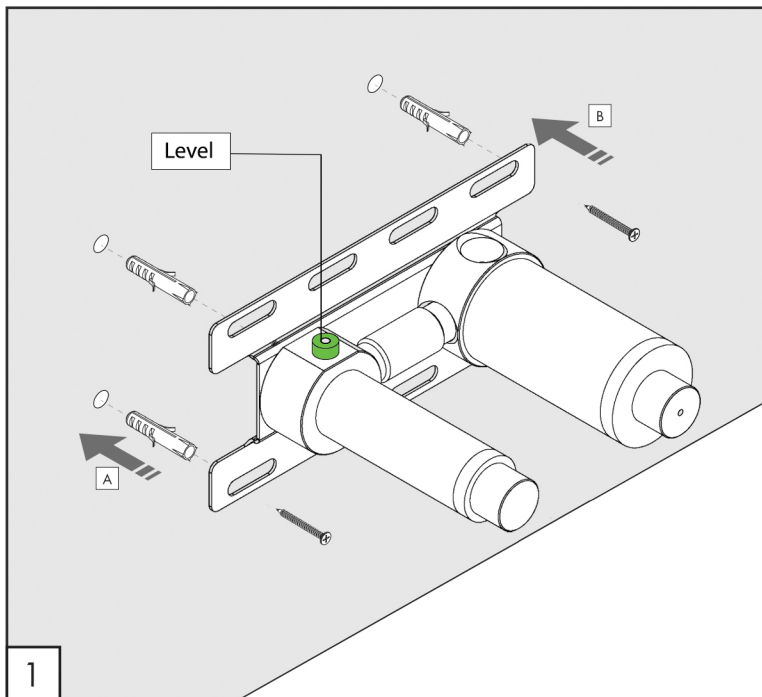


Flow rate aerator 5 l/min / 1.3 gpm, water saving

MAINTENANCE

DO NOT USE		cloric and muriatic acid
		hydrofluoric acid
		chlorine bleach
TO USE		neutral pH detergent






Ma 102

TECHNICAL WARNINGS

The pipes have to be rinsed thoroughly before installation.
 Avoid pressure differences between hot and cold water supply.
 Use of a pressure reducer when static pressure is higher than 5 bar to avoid damage of the cartridge.

WORKING TEMPERATURE

 max. 70 °C
 max. 158 °F

