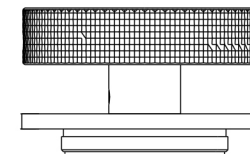


## Chr 08



**Chr 08**  
Deck mounted control  
QOOP

Stainless steel 316L



Flow rate aerator 5 l/min / 1.3 gpm, water saving

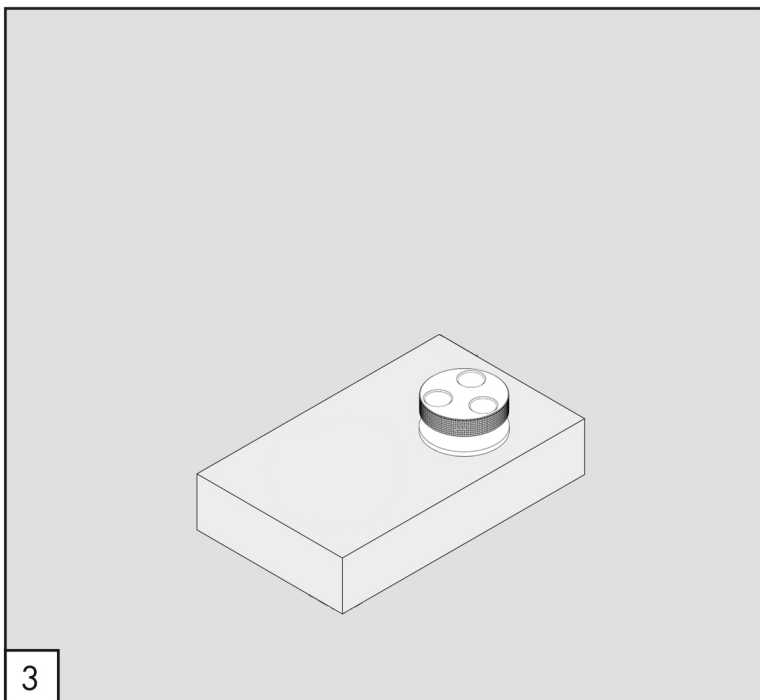
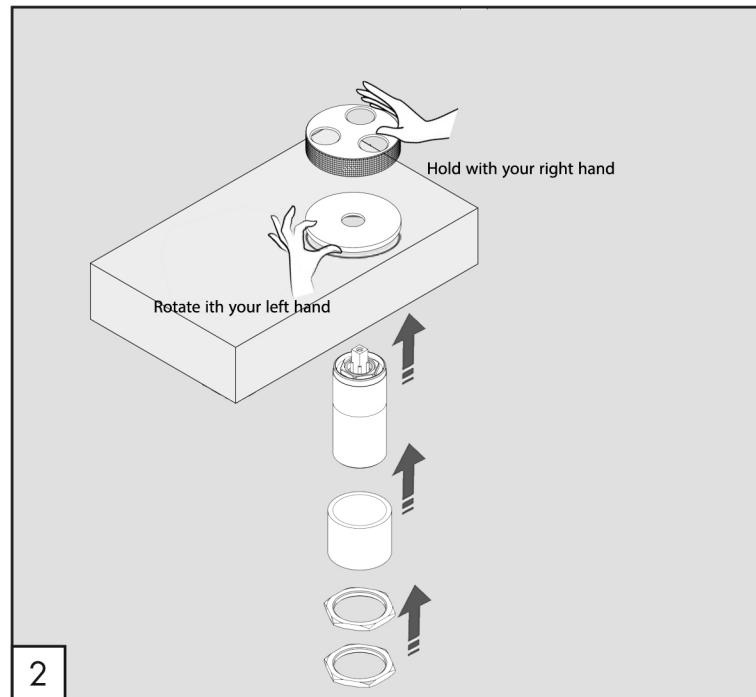
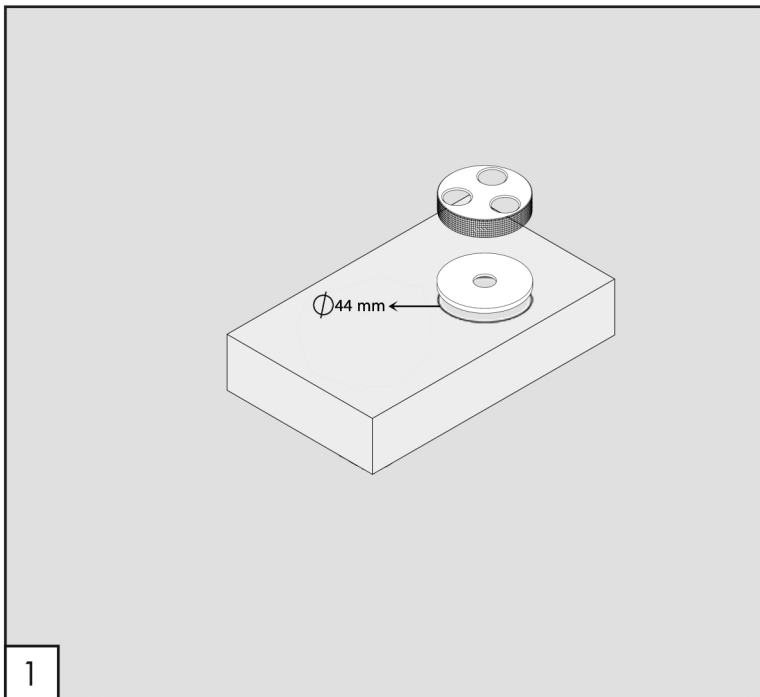


Product that needs built-in part

### MAINTENANCE

DO NOT USE		cloric and muriatic acid
		hydrofluoric acid
		chlorine bleach
TO USE		neutral pH detergent





WORKING TEMPERATURE

$\text{°C}$  max. 70  
 $\text{°F}$  max. 158