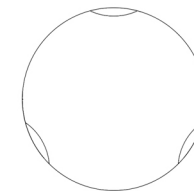


Arn 07



Arn 07
Single lever toilet mixer
QOOP

Stainless steel 316L



Flow rate aerator 5 l/min / 1.3 gpm, water saving



Product that needs built-in part

MAINTENANCE

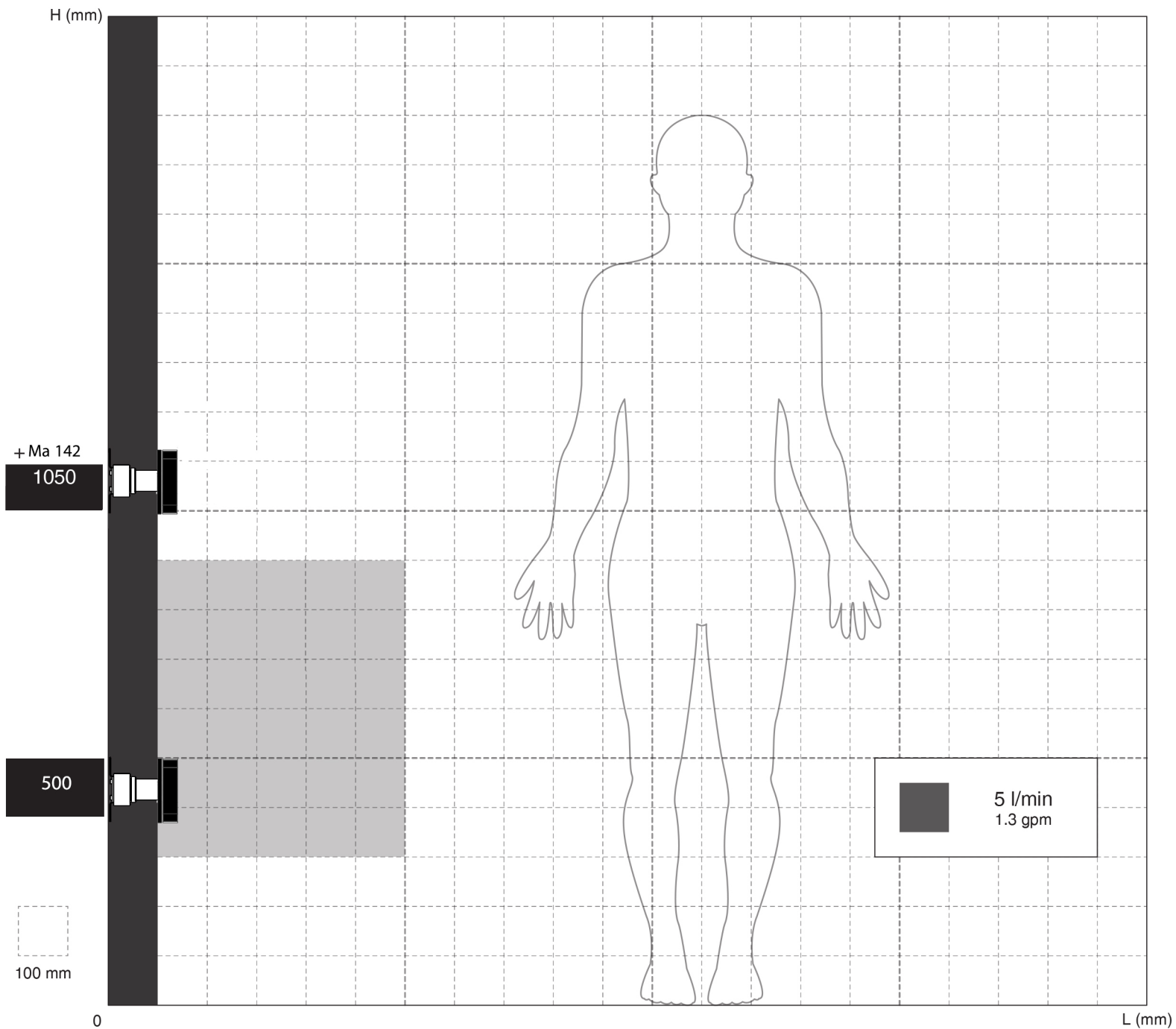
DO NOT USE		cloric and muriatic acid
		hydrofluoric acid
		chlorine bleach
TO USE		neutral pH detergent



Arn 07

INSTALLATION WARNINGS

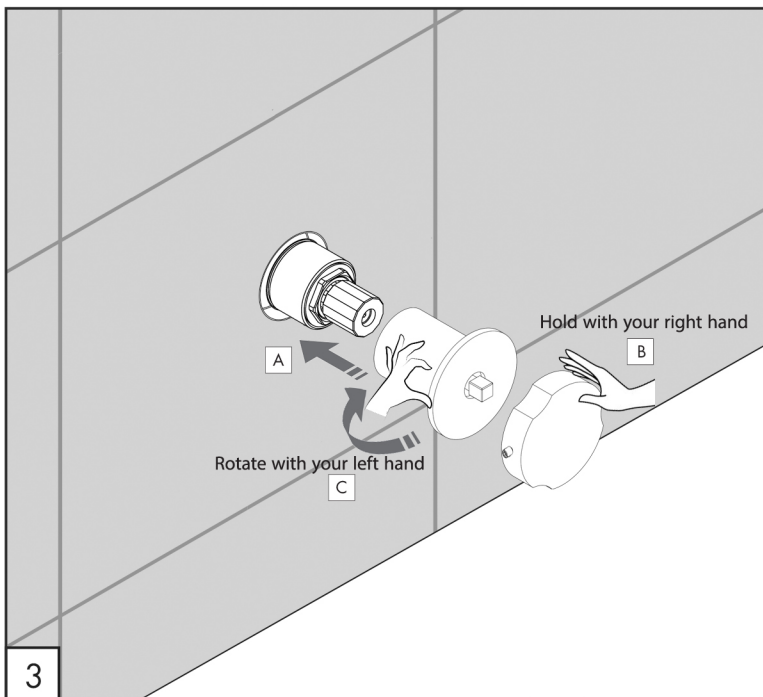
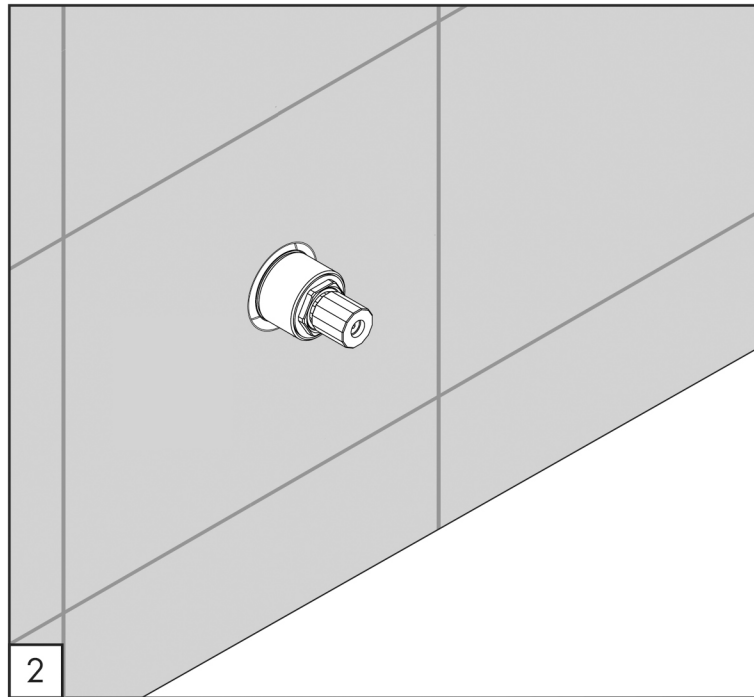
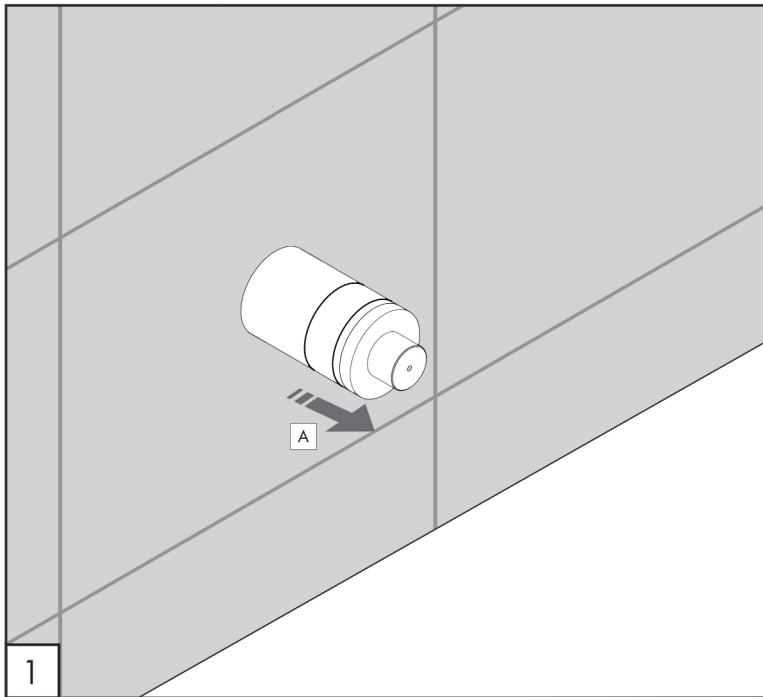
Each individual product has to be installed and adjusted to suit the user's and the washbasin height.
The representation is purely indicative.



AERATOR INCLUDED

 *Mounted aerator*
5 l/min / 1.3 gpm






Arn 07

TECHNICAL WARNINGS

The pipes have to be rinsed thoroughly before installation.
 Avoid pressure differences between hot and cold water supply.
 Use of a pressure reducer when static pressure is higher than 5 bar to avoid damage of the cartridge.

WORKING TEMPERATURE

 max. 70 °C
 max. 158 °F

