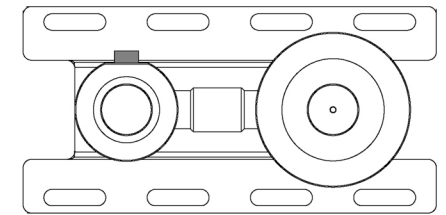


# Ma 101



**Ma 101**  
Internal part for wall basin mixer

QOOP

Stainless steel 316L

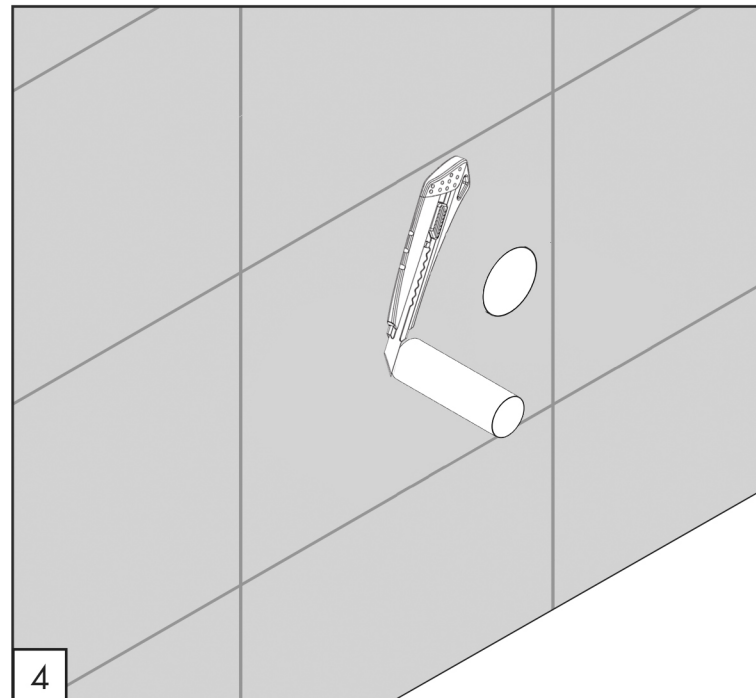
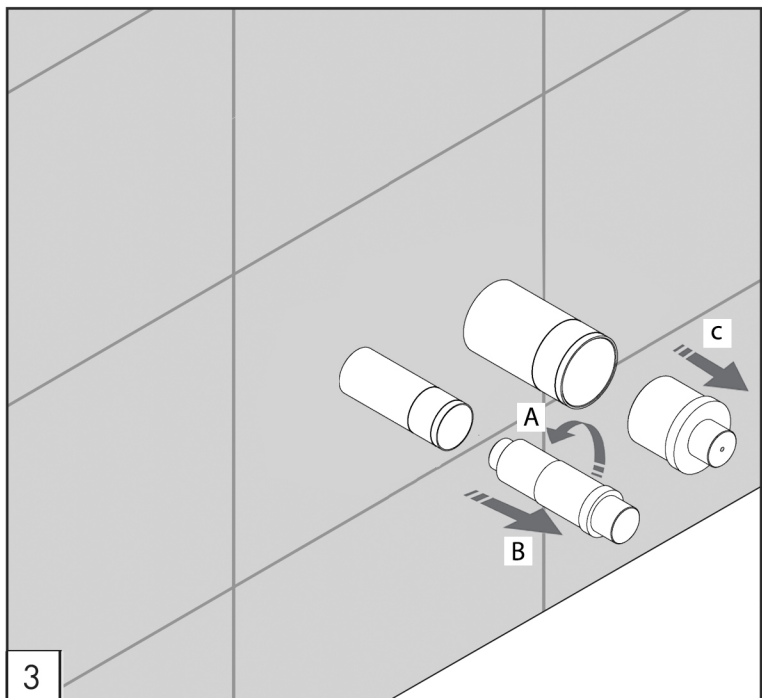
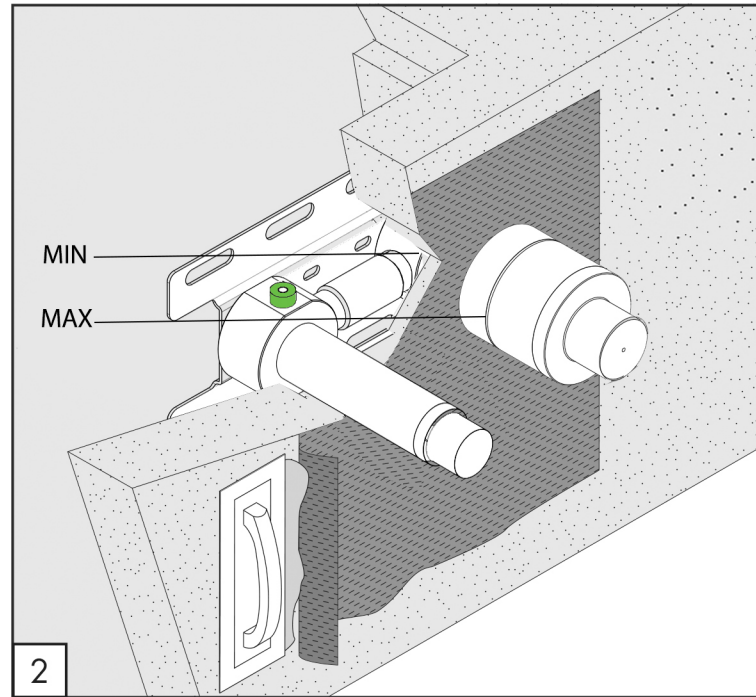
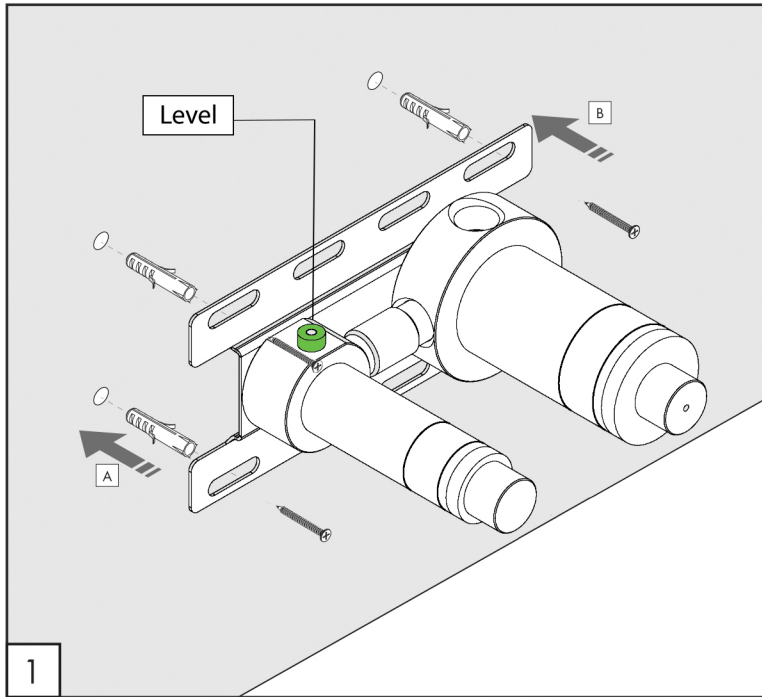


Flow rate aerator 5 l/min / 1.3 gpm, water saving

## MAINTENANCE

DO NOT USE		cloric and muriatic acid
		hydrofluoric acid
		chlorine bleach
TO USE		neutral pH detergent






# Ma 101

## TECHNICAL WARNINGS

The pipes have to be rinsed thoroughly before installation.  
 Avoid pressure differences between hot and cold water supply.  
 Use of a pressure reducer when static pressure is higher than 5 bar to avoid damage of the cartridge.

## WORKING TEMPERATURE

 max. 70 °C  
 max. 158 °F

