

Wall mounted basin mixer

QOOP

Stainless steel 316L



Flow rate aerator 5 l/min / 1.3 gpm, water saving



Product that needs built-in part

MAINTENANCE

DO NOT USE



cloric and muriatic acid



hydrofluoric acid



chlorine bleach

TO USE

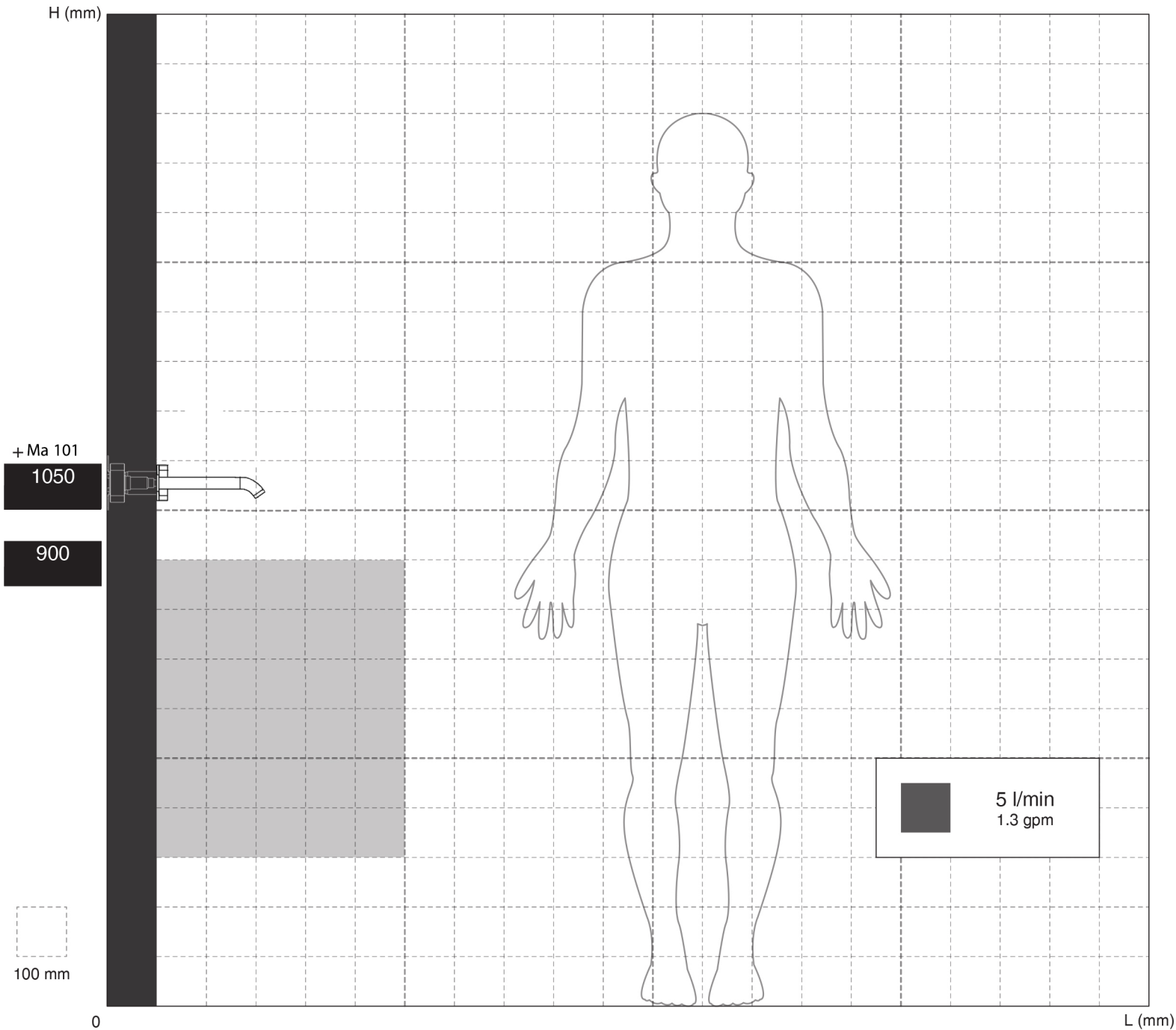


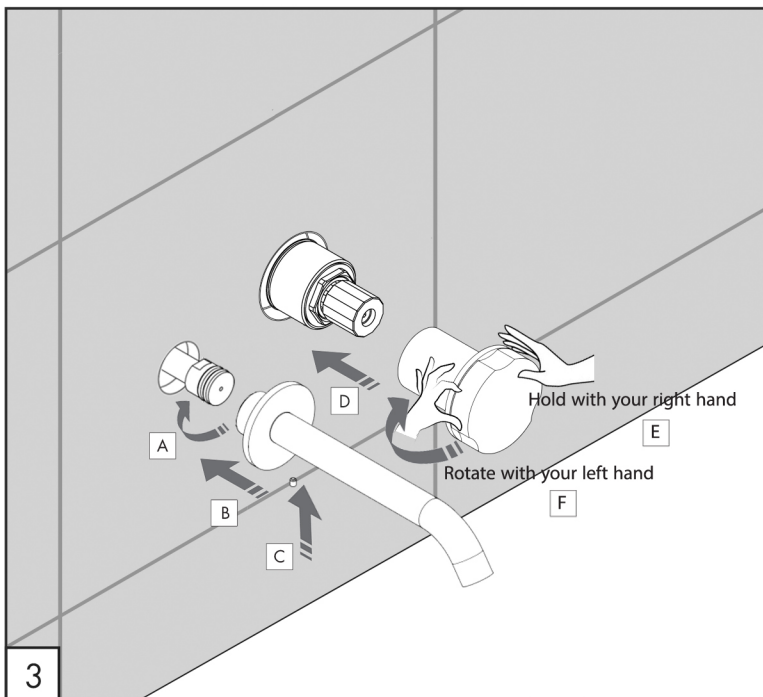
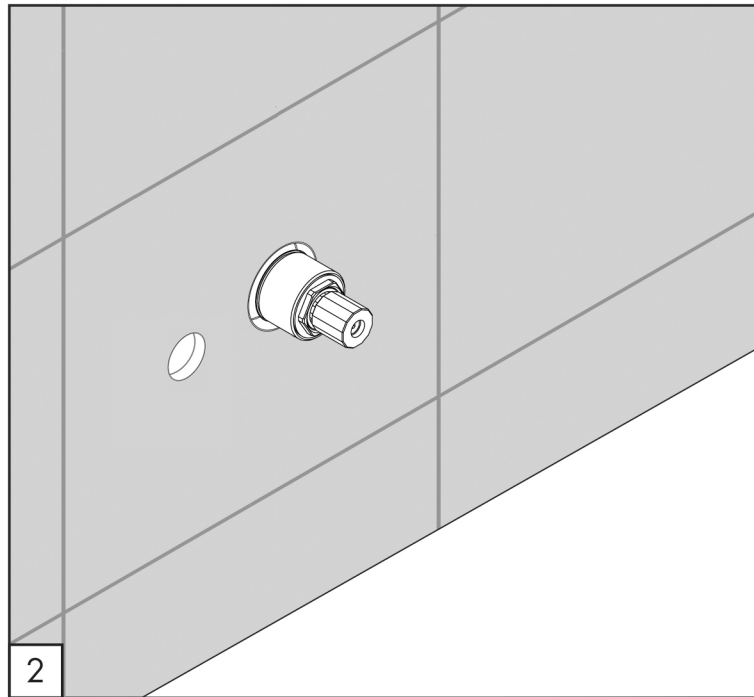
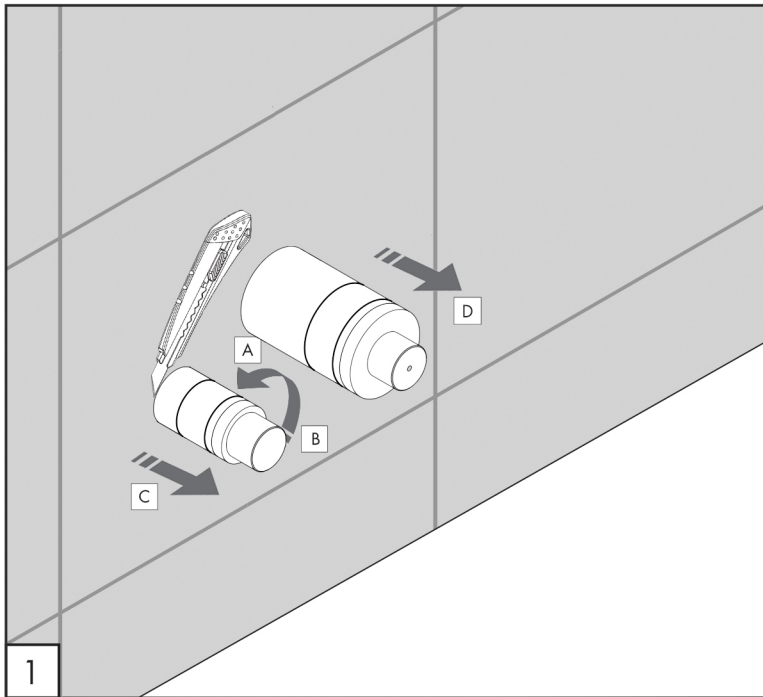
neutral pH detergent



INSTALLATION WARNINGS

AERATOR INCLUDED






Arn 05

TECHNICAL WARNINGS

The pipes have to be rinsed thoroughly before installation.
 Avoid pressure differences between hot and cold water supply.
 Use of a pressure reducer when static pressure is higher than 5 bar to avoid damage of the cartridge.

WORKING TEMPERATURE

 max. 70 °C
 max. 158 °F

