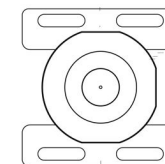


Ma 112



Ma 112
Internal part for wall basin mixer

QOOP

Stainless steel 304 L



Flow rate aerator 5 l/min / 1.3 gpm, water saving



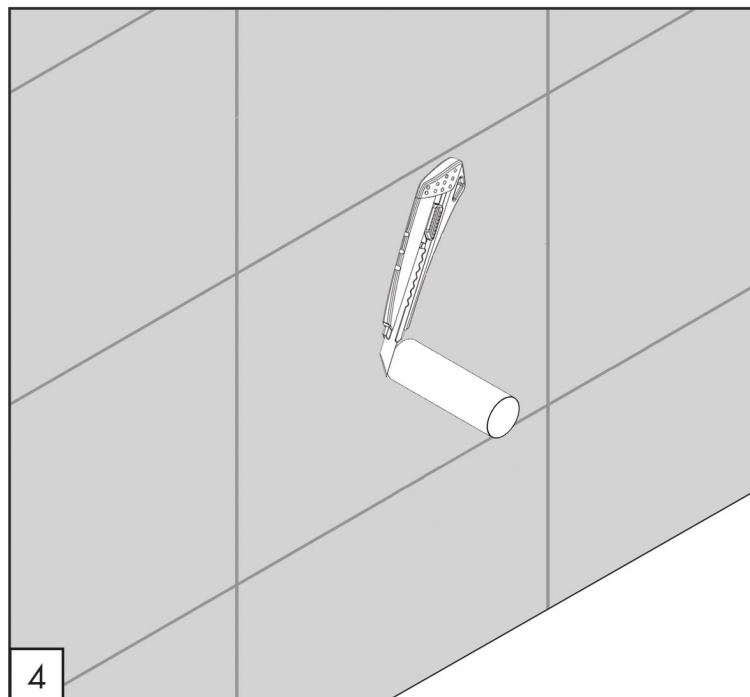
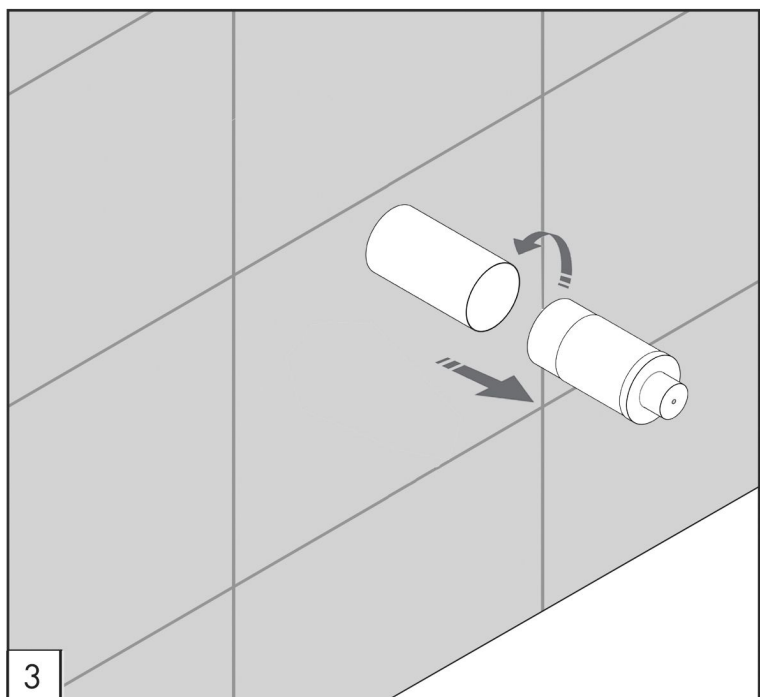
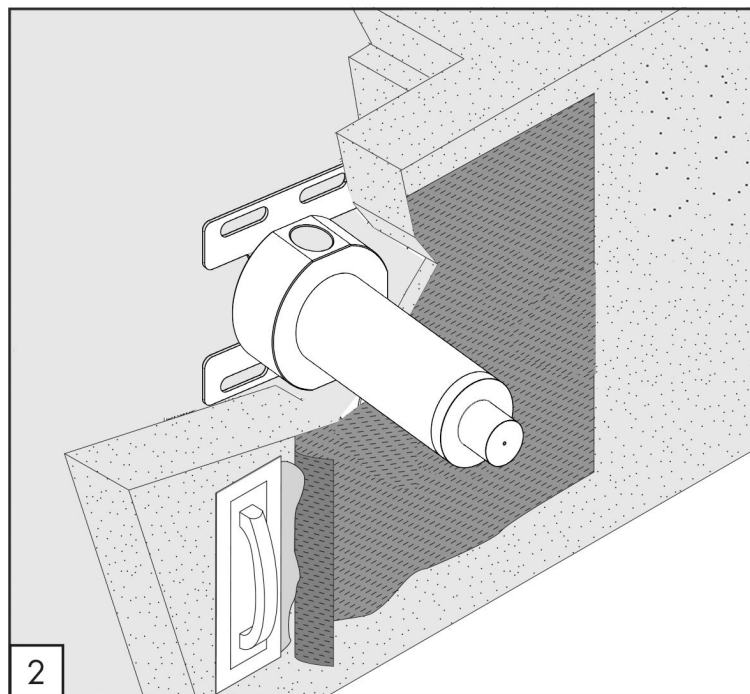
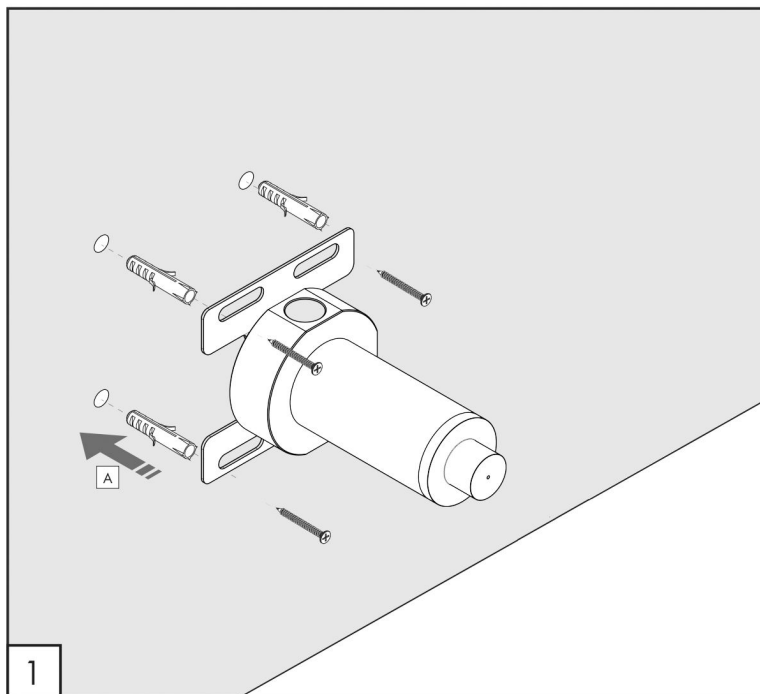
Product that needs built-in part

MAINTENANCE

| | | |
|------------|------------------|--------------------------|
| DO NOT USE | HCl | cloric and muriatic acid |
| | HF | hydrofluoric acid |
| | NaClO | chlorine bleach |
| TO USE | pH 7 | neutral pH detergent |

*All DIMS TO BE IN MM






Ma 112

TECHNICAL WARNINGS

The pipes have to be rinsed thoroughly before installation.
 Avoid pressure differences between hot and cold water supply.
 Use of a pressure reducer when static pressure is higher than 5 bar to avoid damage of the cartridge.

WORKING TEMPERATURE

 max. 70 °C
 max. 158 °F

