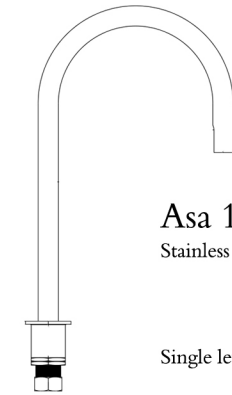


Asa 13



Asa 13
Stainless Steel 316 L

Single lever sink mixer



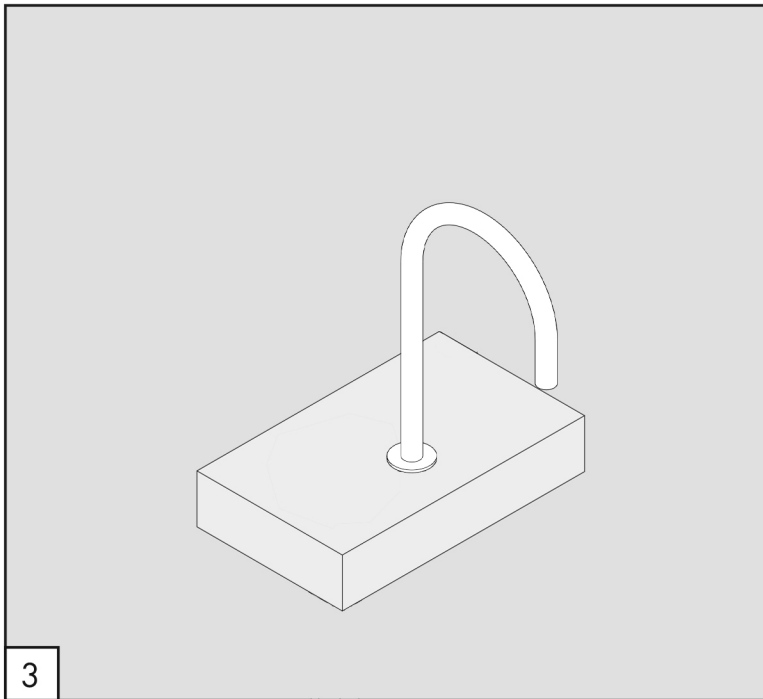
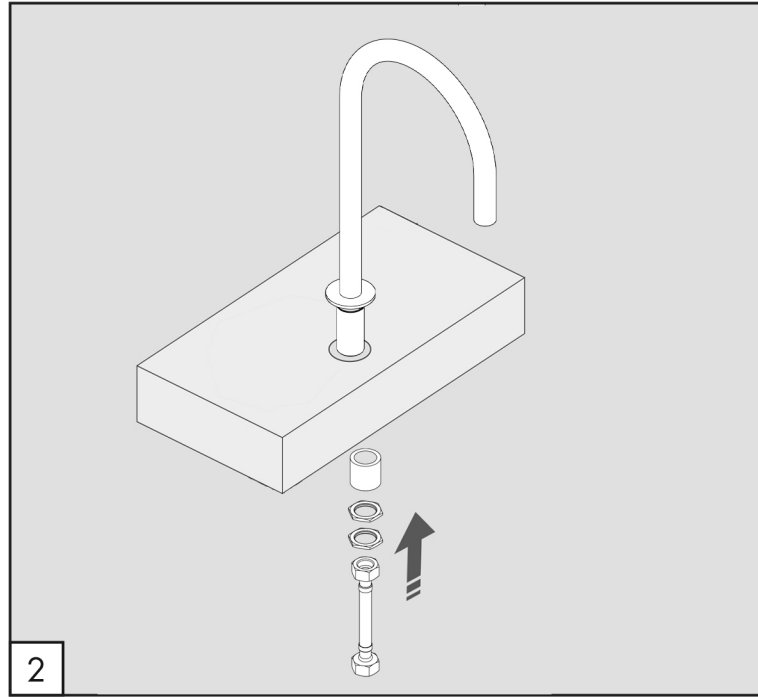
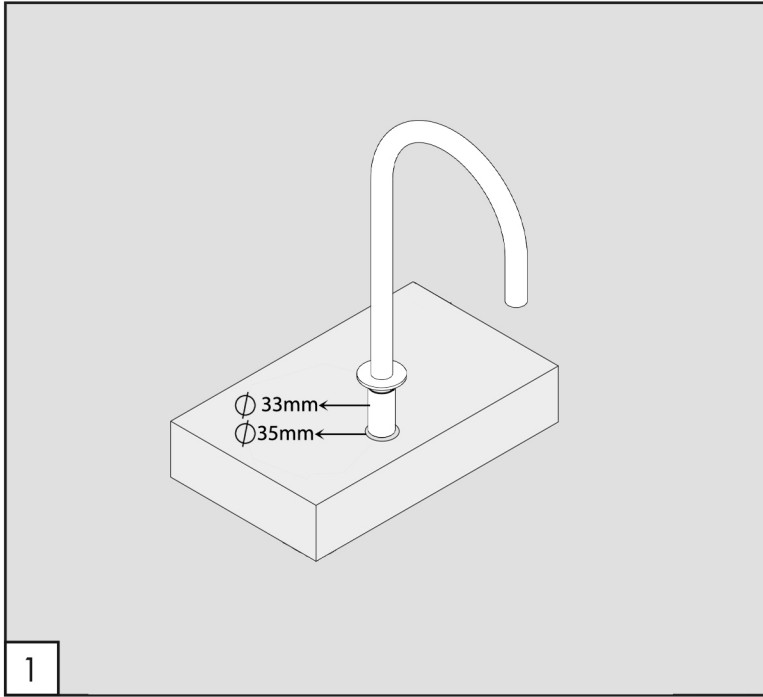
Flow rate aerator 5 l/min / 1.3 gpm, water saving

MAINTENANCE


- | | | |
|------------|--|---------------------------|
| DO NOT USE | | chloric and muriatic acid |
| | | hydrofluoric acid |
| | | chlorine bleach |
| TO USE | | neutral pH detergent |



Asa 13



WORKING TEMPERATURE

 max. 70 °C
max. 158 °F

