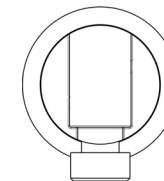


# Ag 125



**Ag 125**  
Wall handshower holder with shower outlet elbow  
QOOP

Stainless steel 316L



Flow rate aerator 5 l/min / 1.3 gpm, water saving



Product that needs built-in part

## MAINTENANCE

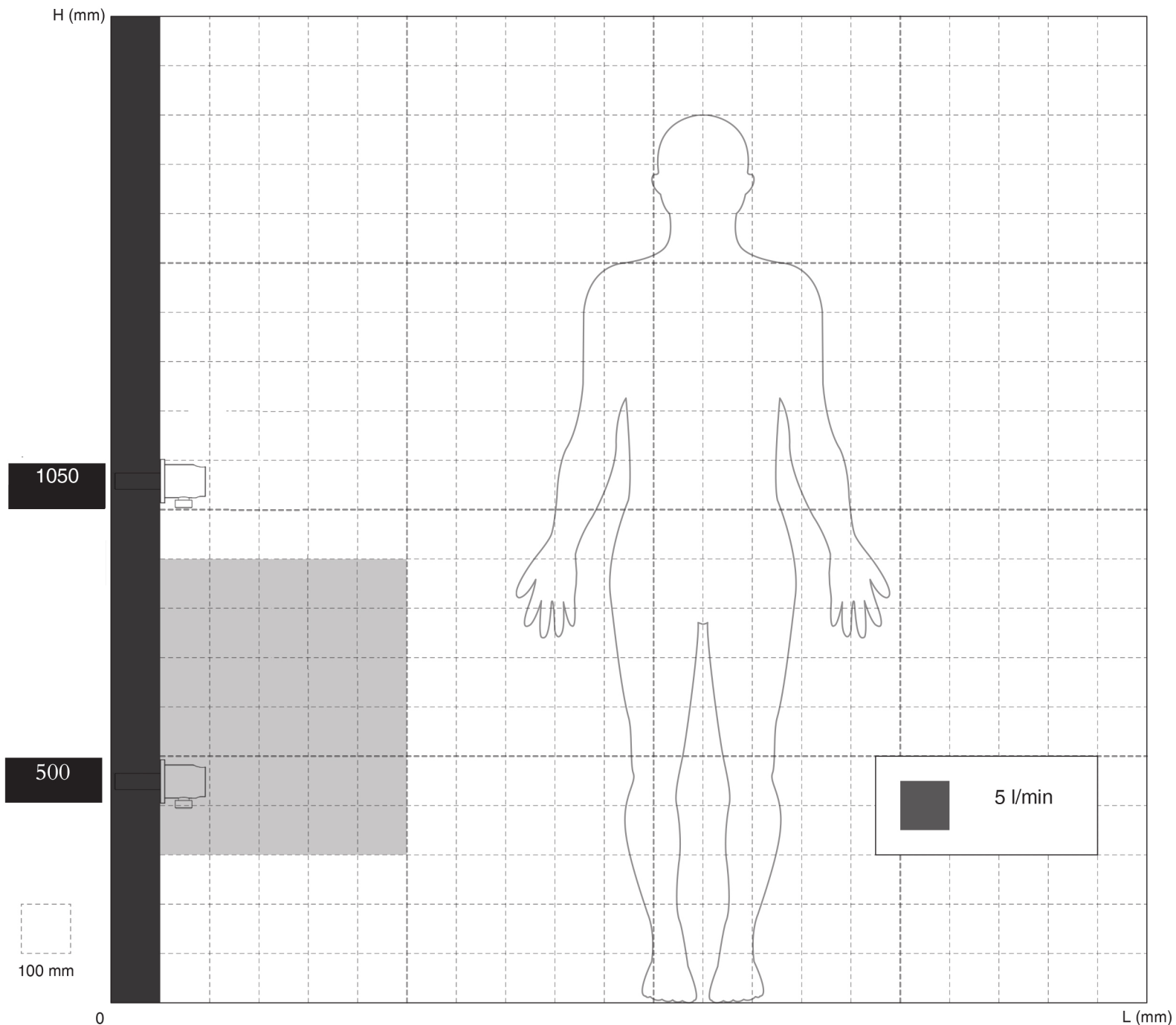
DO NOT USE		chloric and muriatic acid
		hydrofluoric acid
		chlorine bleach
TO USE		neutral pH detergent



# Ag 125

## INSTALLATION WARNINGS


Each individual product has to be installed and adjusted to suit the user's and the washbasin height.  
The representation is purely indicative.




## AERATOR INCLUDED

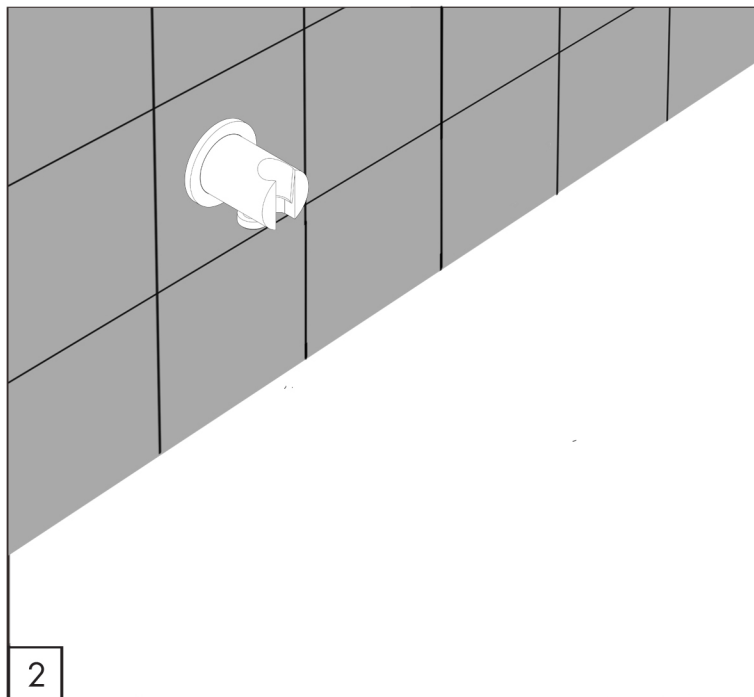
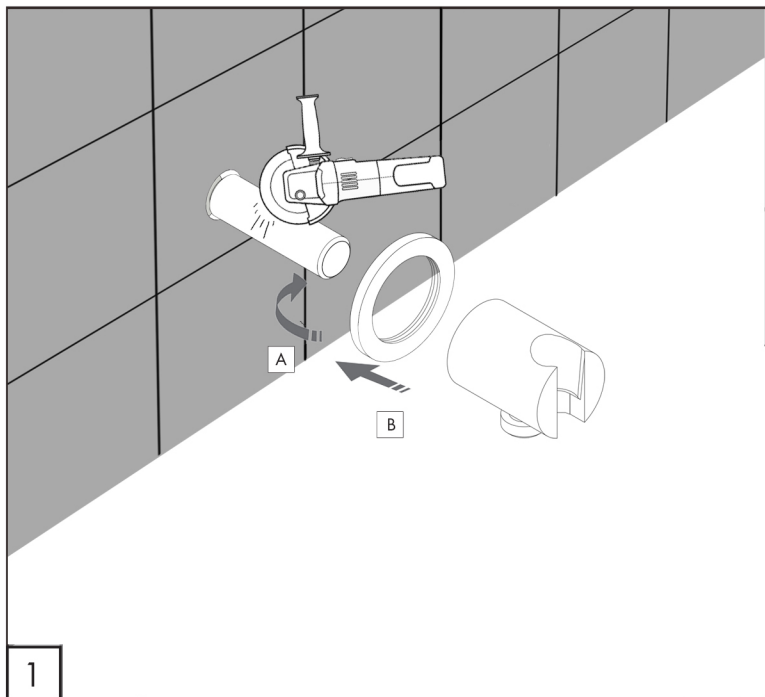
 **Mounted aerator**  
5 l/min / 1.3 gpm

## AERATORS ON DEMAND

 **Compliant with LEED standards**  
1.9 l/min / 0.5 gpm

 **Compliant with LEED standards**  
3.8 l/min / 1 gpm






# Ag 125

## TECHNICAL WARNINGS

The pipes have to be rinsed thoroughly before installation.  
 Avoid pressure differences between hot and cold water supply.  
 Use of a pressure reducer when static pressure is higher than 5 bar to avoid damage of the cartridge.

## WORKING TEMPERATURE

 max. 70 °C  
 max. 158 °F

